



21 Woodside Green

, Cliffe Woods, ME3 8JZ

Offers Over £325,000

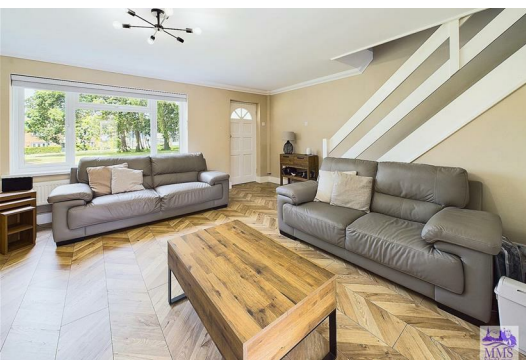


CHAIN FREE. Virtual tour available. Welcome to this charming house located in the picturesque village of Woodside Green, Cliffe Woods. This delightful property boasts a convenient entry porch, spacious light lounge and a newly fitted kitchen/diner with integrated appliances, perfect for hosting family and friends.

With 2 double bedrooms, 1 bathroom, and a spacious 947 sq ft of living space, this home offers a comfortable environment for you and your loved ones. The property exudes character and warmth, making it a perfect choice for those seeking a lovely family home.

Situated in a village location, this house overlooks a green area, providing a peaceful and scenic view. The presence of a garage en bloc adds convenience and extra storage space for your belongings. Additionally, the newly installed windows enhance the property's appeal and energy efficiency.

Within close proximity to a lovely primary school, this home is ideal for families with young children. Whether you're looking to settle down or simply seeking a tranquil retreat, this stunning property offers the perfect blend of comfort and style. Don't miss the opportunity to make this house your new home in the heart of Cliffe Woods. Freehold. Council tax band C. EPC rating C.

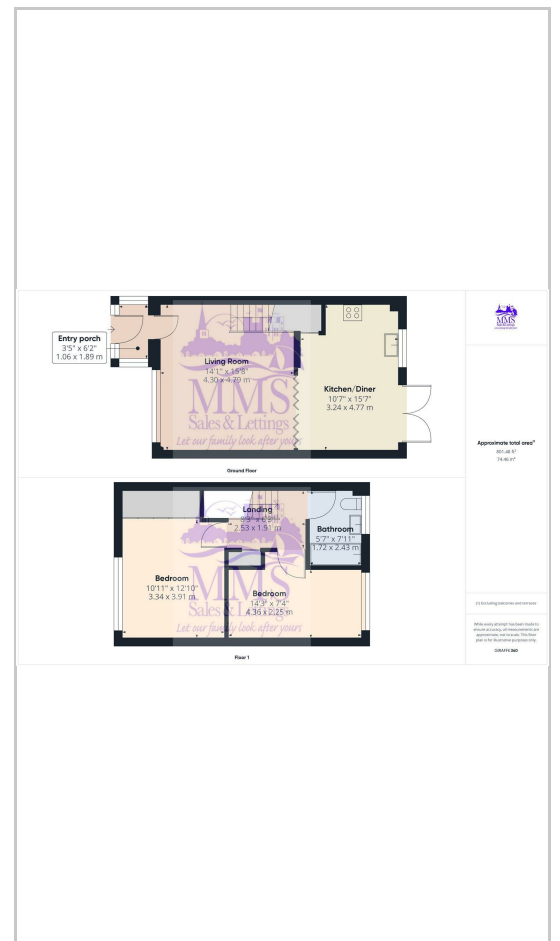


- Entrance porch
- Living room
- Kitchen/Diner
- Stairs/Landing
- Bedroom 1
- Bedroom 2
- Bathroom
- Rear garden
- Garage en-bloc

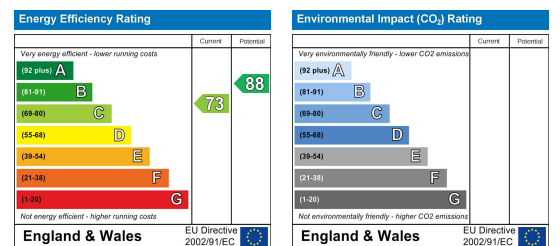
Area Map



Floor Plans



Energy Efficiency Graph



These particulars, whilst believed to be accurate are set out as a general outline only for guidance and do not constitute any part of an offer or contract. Intending purchasers should not rely on them as statements of representation of fact, but must satisfy themselves by inspection or otherwise as to their accuracy. No person in this firm's employment has the authority to make or give any representation or warranty in respect of the property.